



NASSAU COUNTY
BOARD OF COUNTY COMMISSIONERS
P.O. Box 1010
Fernandina Beach, Florida 32035-1010

Nick Deonas
David C. Howard
Pete Cooper
Floyd L. Vanzant
Marianne Marshall

Dist. No. 1 Fernandina Beach
Dist. No. 2 Fernandina Beach
Dist. No. 3 Yulee
Dist. No. 4 Hilliard
Dist. No. 5 Callahan

JOSEPH M. "Chip" OXLEY, JR.
Ex-Officio Clerk

MICHAEL S. MULLIN
County Attorney

WALTER D. GOSSETT
County Coordinator

Resolution Number - 99-03

WHEREAS, the Board of County Commissioners of Nassau County, Florida did establish Ordinance Number 92-14 providing for a process of naming and renaming streets in Nassau County; and


WHEREAS, Nassau County finds it necessary to name **an unnamed easement off Bismark road**; located in Sections 26 & 46; Township 2N; Range 25; **"FAMILY COURT"**; and

WHEREAS, the 911 Coordinator's Office has reviewed this need in accordance with Ordinance Number 92-14, and has verified the request as acceptable and not in conflict with names already assigned; and

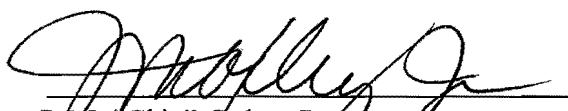
WHEREAS, the 911 Coordinator's office has forwarded the request to the Board of County Commissioners for consideration, now

THEREFORE, LET IT BE RESOLVED; this 19th Day of January, 1999, that the street currently known as **an unnamed easement off of Bismark Road** in Nassau County, Florida be hereafter referred to and known as **"Family Court"** in Nassau County, Florida, and the County Engineer shall be authorized to erect any and all necessary signs indicating said name.

BOARD OF COUNTY COMMISSIONERS
OF NASSAU COUNTY FLORIDA

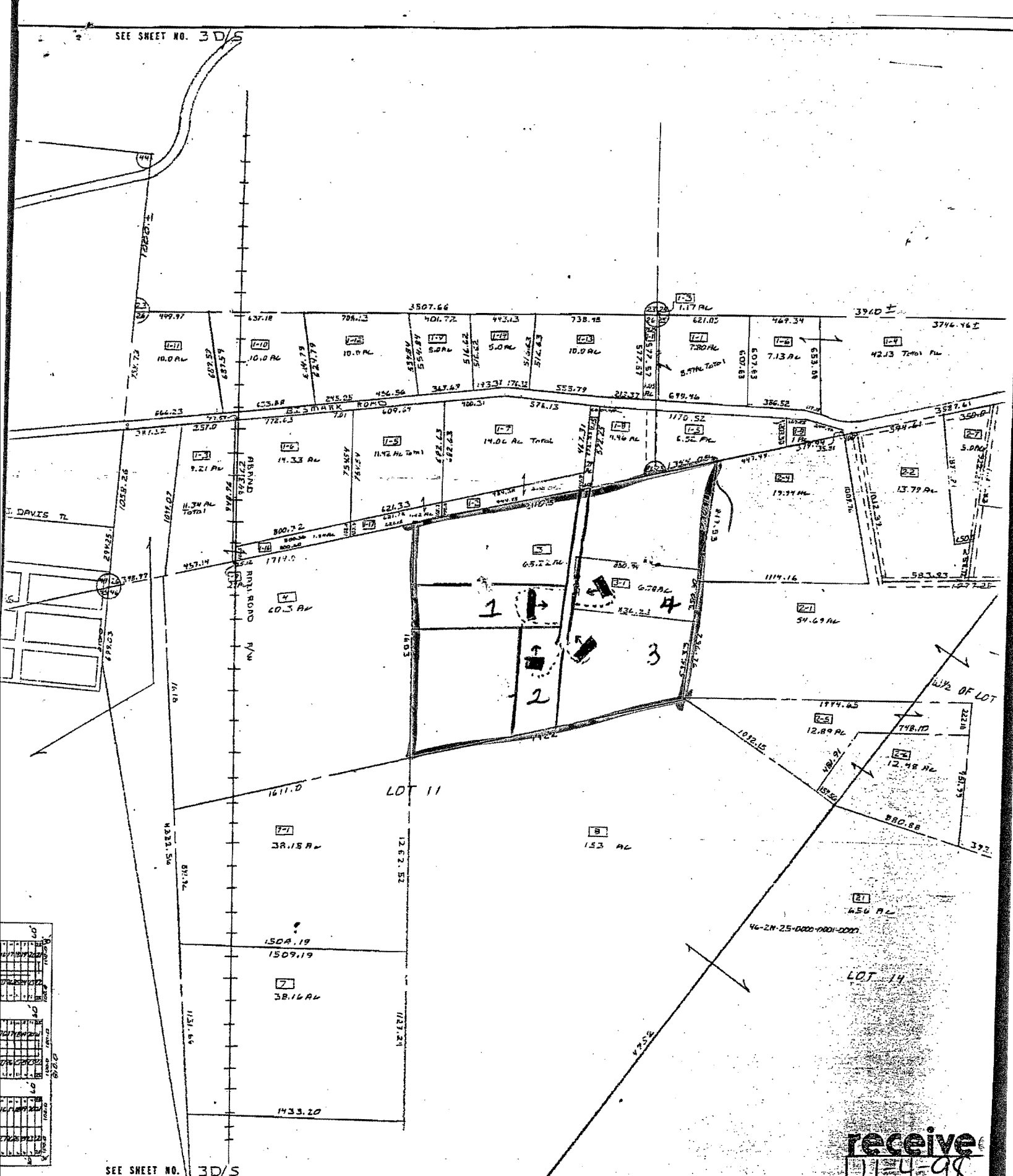

J.H. Cooper, Chairman

ATTEST:


J.M. "Chip" Oxley, Jr.
Ex-Officio Clerk

(904) 225-2610 Board Room; 321-5703, 879-1029, (800) 958-3496

An Affirmative Action / Equal Opportunity Employer



ASSESSMENT MAP
 NASSAU COUNTY,
 FLORIDA
 NASSAU COUNTY PROPERTY APPRAISER
 FERNANDINA BEACH, FLA.

SECTION 25-26-44-45-46
 TOWNSHIP 2N
 RANGE 25E
 COMPILED & DRAWN, JANUARY, 1961
 REVISION DATES
 TRACING DM PRINT 3-14-92

SHEET
 NUMB
 3D
 26

receive
 11-4-98